

How to mount the horizontal constrainer

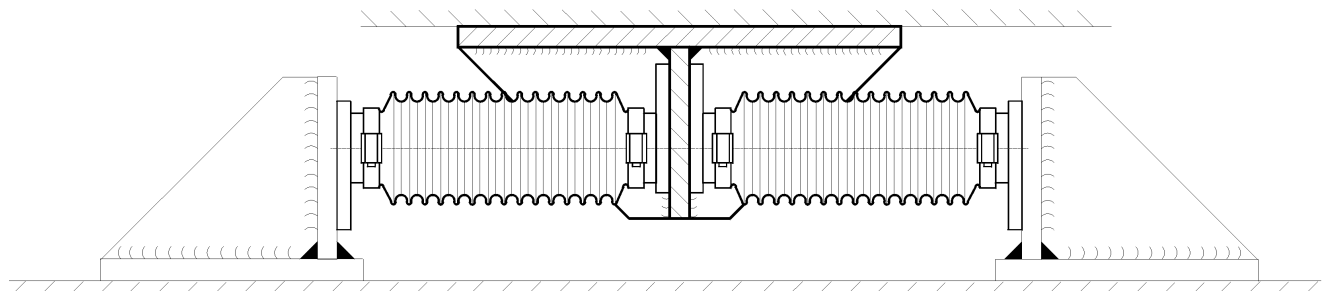


Fig. 1 Simple mounting

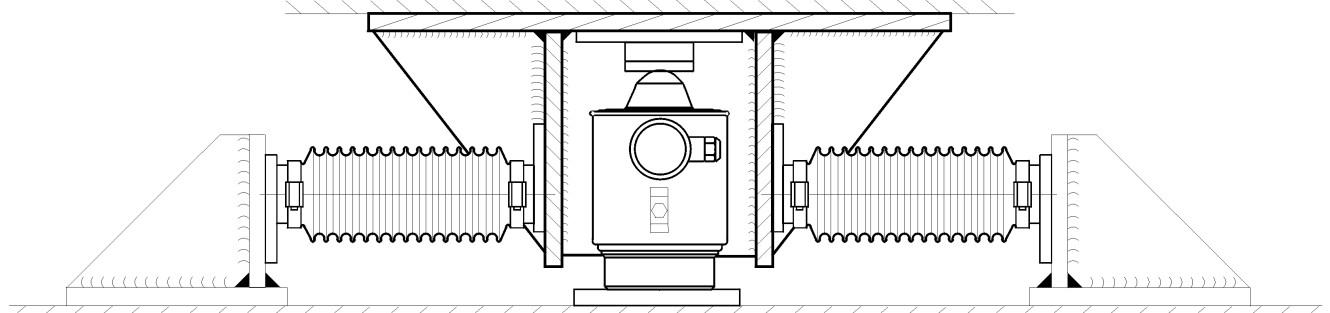


Fig. 2 Combined mounting

The above figures suggest two different ways how to mount the horizontal constrainers: simple mounting and combined mounting. Both principles can be used, none of them is superior to the other.

Remark:

- The horizontal constrainers can transfer high loads (200kN). It is the responsibility of the user to make sure that the consoles for the installation of the horizontal constrainer withstand the design loads.



GLOBAL Weighing

GWT GLOBAL Weighing Technologies GmbH P.O.B. 730 370 D-22123 Hamburg Tel:++49-40-67960-303 Fax:++49-40-67960-608