

# Tool Steel Shear Beam Load Cell 500kg ... 5t Type N/C3

global weighing technologies



## MP 48

- High quality alloy steel
- Aluminized coated finish for outstanding corrosion resistance
- Compatible with other sources
- Hermetically welded seal (IP67)
- Approved to OIML R60

### APPLICATIONS

- Platform scales
- Tank & Hopper scales

### Technical Data

Accuracy class

Minimum dead load

Rated capacity

Safe overload

Destructive load

Rated output

Tolerance on rated output

Tolerance on zero signal

Repeatability

Creep, during 30 min.

Temperature effect on zero

Temperature effect on output

Input impedance

Output impedance

Insulation impedance

Recommended supply voltage

Max. supply voltage

Nominal ambient temp. range

Usable ambient temp. range

Cable

Protection class

$E_{min}$

$E_{max}$

$E_U$

$E_d$

$C_n$

$d_C$

$S_{min}$

$E_R$

$d_{cr}$

$TK_{smin}$

$TK_c$

$R_{LC}$

$R_O$

$R_{IS}$

$B_u$

$U_{max}$

$B_T$

$B_{TU}$

-

-

N

0.03 %

<0.03 %  $C_n$

<0.028 %  $C_n/10K$

<0.014 %  $C_n/10K$

C3

0.025 %

<0.017 %  $C_n$

<0.017 %  $C_n/10K$

<0.011 %  $C_n/10K$

2 %  $E_{max}$

s.table

150 %  $E_{max}$

300 %  $E_{max}$

2 mV/V

$\pm 0.25$  %  $C_n$

$\pm 1$  %  $C_n$

<0.012 %  $C_n$

350  $\Omega \pm 7 \Omega$

352  $\Omega \pm 3 \Omega$

>1000 x 10<sup>6</sup>  $\Omega$

10 V

15 V

-10...+40°C

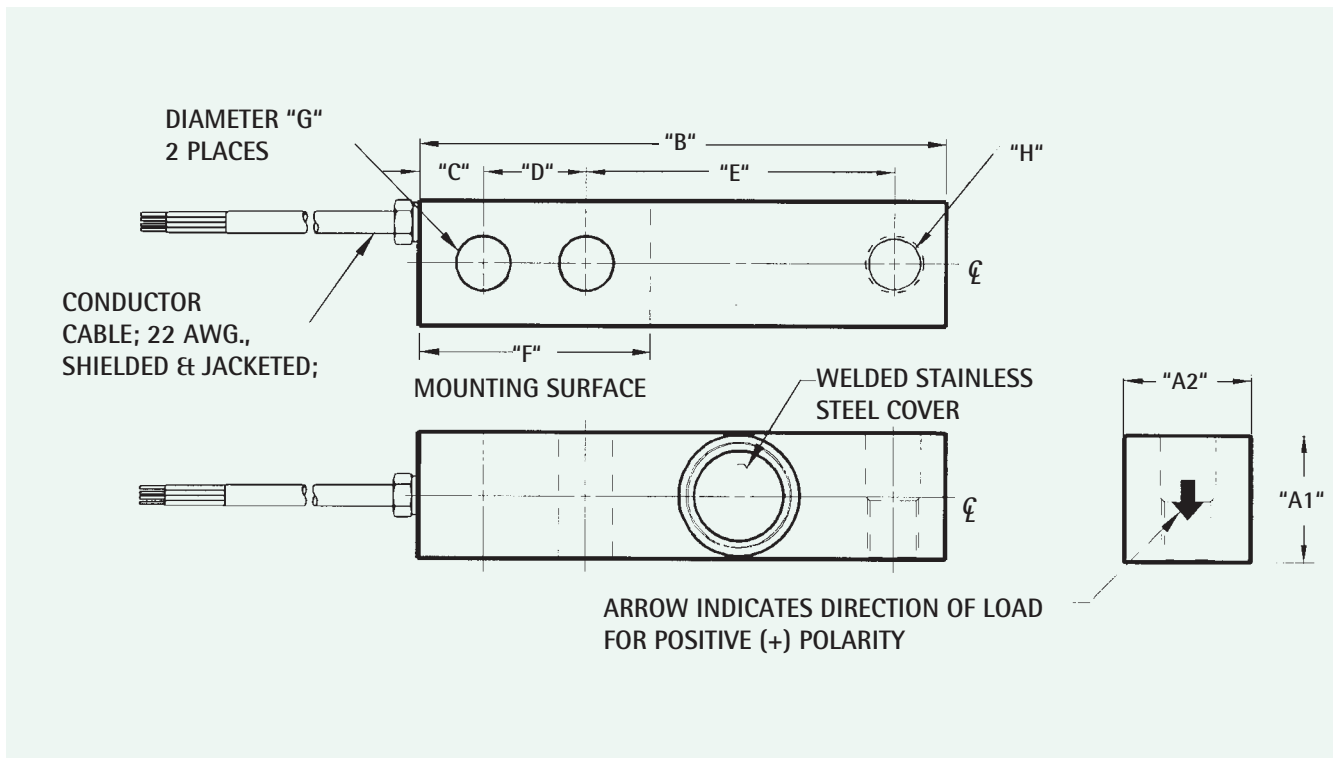
-20...+65°C

5 m, 4 wires with screen

IP 67

- Temperature effect on sensitivity and combined error (accuracy class) are combined in such a way that the load cells meet the tolerance envelope of the OIML recommendations R60.
- When selecting load cells for a particular environment, the IP rating should only be used as a guide. Care should be given to the design of the weighing product to protect the load cell.
- The correct mounting of the load cell is essential to obtain optimum performance.





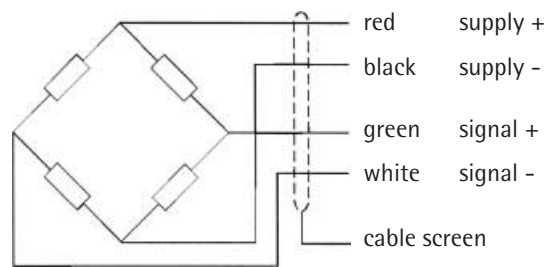
Dimensions all in mm

Capacity	F	E	D	C	B	A1	A2	Ø G	Ø H	H	Weight
500kg ... 2t	57.1	76.2	25.4	16	130	31	31	13.0	13.0	M 12x1.75	1.8 kg
3 t, 5 t	76.2	95.2	38.1	19	171.4	37.8	37.8	20.6	20.6	M 20x2.5	2.9 kg

Type and Order Code

Max. capacity  
2 mV/V

MP 48/52 N	MP 48/52 C3	500 kg
MP 48/13 N	MP 48/13 C3	1000 kg
MP 48/23 N	MP 48/23 C3	2000 kg
MP 48/33 N	MP 48/33 C3	3000 kg
MP 48/53 N	MP 48/53 C3	5000 kg



Definitions acc. to VDI/VDE 2637, Technical data and dimension for product description only. Data subject to change without notice.