

# Shear beam mounting kit

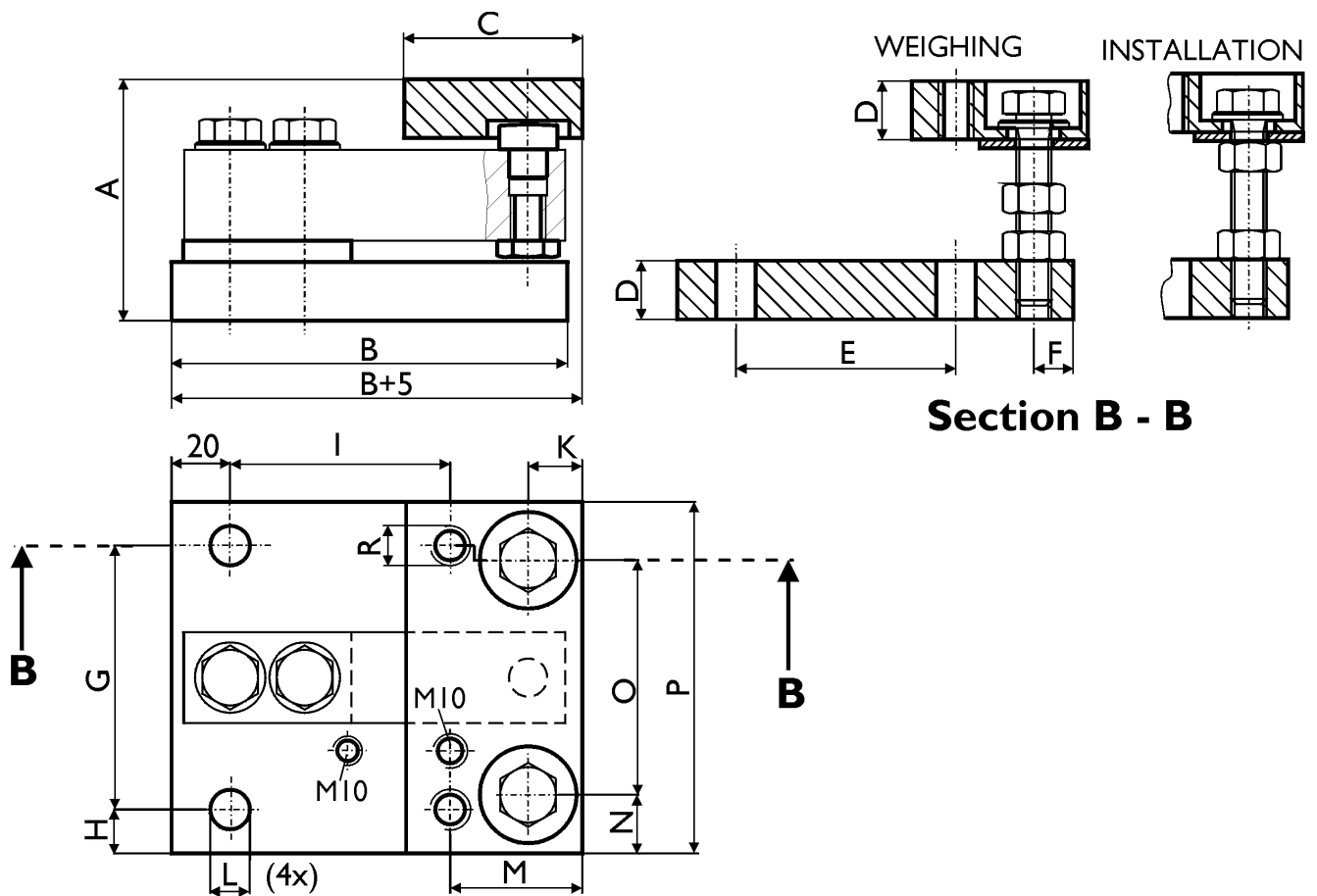
## MP49/95, MP 49/96

Stainless steel mounting kit for shear beams MP 48 and MP 49

- integrated lift-off protection
- jack-up facility enables easy exchange of shear beam

MP 49/95 for shear beams between 500kg and 2t nominal load

MP 49/96 for shear beams with 3t and 5t nominal load



|          | A    | B   | C  | D  | E  | F    | G   | H  | I  | K    | L     | M  | N  | O  | P   | R   |
|----------|------|-----|----|----|----|------|-----|----|----|------|-------|----|----|----|-----|-----|
| MP 49/95 | 82.3 | 135 | 60 | 20 | 75 | 13.4 | 90  | 15 | 75 | 18.4 | ∅13.5 | 45 | 20 | 80 | 120 | M12 |
| MP 49/96 | 99.1 | 175 | 80 | 25 | 95 | 21.7 | 110 | 20 | 95 | 26.7 | ∅17.5 | 65 | 28 | 94 | 150 | M16 |

all dimensions in mm

### Additional notes

- Ensure that there is enough free space for the lift-off protection during weighing.
- Ensure that the load button is placed in the centre of the hole in the upper mounting plate.



### GLOBAL Weighing